



# Mold Awareness

By RMEHS

# Objectives

- ▶ Basics of mold
- ▶ Mold properties
- ▶ What you can do
- ▶ Health hazards associated with mold



# BASICS OF MOLD

- Fungi are neither plant nor animal and are classified in a kingdom of their own
- Fungi include molds, yeasts, mushrooms, rusts, smuts, truffles, and puffballs
- Fungi gives us things like bread and beer!



# SO MOLD IS GOOD, RIGHT??



There are over 100,000 known species of fungus and more than 1000 of them are found in North American Households!

# Can I just avoid all mold?

- **NO!!**
- **Mold is ubiquitous!!**
- **Mold is everywhere you go!**



# MOLD PROPERTIES



- Molds and mildews are fungi that grow on **surfaces** and on deteriorating materials.
- These molds survive by digesting **organic** material-Mold can't grow in metal or concrete
- Molds need moisture and **nutrients** to grow
- When outside, molds help the environment by assisting in the natural decay of dead plant matter. They gradually **destroy** the things they grow on.

# ACT FAST...Mold will continue to grow! (cleanup)

- Address the moisture problem or place a work order through School Dude
- Wipe mold off of hard surfaces with detergent and water, and dry completely
- Clorox wipes are a great convenient tool to wipe surface mold/mildew
- If the material is absorbent or porous (carpet, drywall), it may have to be thrown out if it becomes moldy
- Do not paint/caulk over moldy surfaces
- Limit exposure-always use a wet method of cleanup



# Examples in Our Dorms



Mold on Inside of Curtain



Mold On Curtain Track

Need to encourage students to open curtains to prevent collection of moisture in between surfaces. Moisture gets trapped!



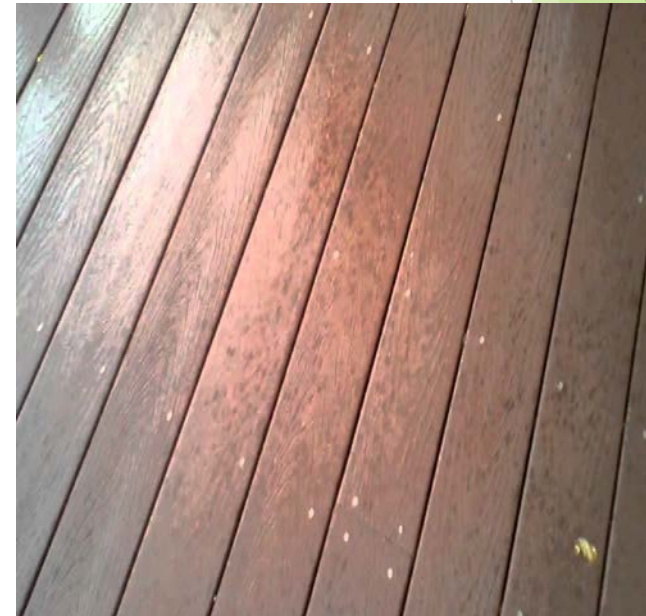
# COMMON TYPES OF MOLD FOUND ON BUILDING MATERIAL

- **Common species found on collected samples**
  - Penicillium/aspergillus
  - Cladosporium



# CONTRIBUTORS TO MOLD SPORE GROWTH

- Defective construction materials or application
- Leaking material joints/improper flashing or caulking
- Dirty/dusty environments
- Bug and rodent feces
- Poor drainage
- Flood damaged buildings



# HEALTH EFFECTS



- Most indoor exposures to mold **do not present a risk of adverse health effects**
- Molds can cause adverse effects by producing allergens
- The onset of allergic reactions can be either immediate or delayed (runny nose/red eyes)
- Mold is a sensitizer
- **Systemic** infections in humans are rare, except for those with **impaired immunity**

# Final Remarks...

- ▶ PLEASE stress the importance of good housekeeping!
- ▶ Work orders can be placed via School Dude to request the custodial staff to clean dust or mold
- ▶ Encourage students to open curtains throughout the day, not leave the bathroom door closed after showering, etc.

# ADDITIONAL QUESTIONS OR INFORMATION

- For any additional questions, feel free to contact me.

**Amber Berry**  
**609-626-6126**

