



**The School of Natural
Sciences & Mathematics**

Interim Provost and Vice President for
Academic Affairs
Dr. Marissa Levy and Dr. Claudine Keenan

Dean, School of Natural Sciences and Mathematics
Dr. Amanda Norvell

Assistant Dean
Thushani Rodrigo-Peiris

Professional Services Specialist 3
Adam Coopersmith

Assistant Supervisor
Cheryl Wilson

Principal Clerk Transcriber
Yolanda Lively

Professional Services Specialist 3
Adriane Sicknick

Technical Assistant, HE
Jennifer Marcello

Professional Services Specialist 3
Marie Jelinski

Secretarial Assistant 1
Desiree Gaston

Interim Director
Coastal Research Center
Kimberly McKenna
[Click here for Organizational Detail](#)

Director
Academic Labs & Field Facilities
Vacant
[Click here for Organizational Detail](#)

Biology (21)
Adam Aguiar – AC
Luis Arriaga – TS
Guy Barbato – AC
Matthew Bonnan – P
David Burleigh – AC
Kevin Coffey – TS
David Furgione – ¾ I
Tim Haresign – AC
Nathaniel Hartman – AC
Tara Luke Harmer – P
Michael Lague – AC
Michael Law – AC
Margaret Lewis – P
Craig Lind – AC
Ekaterina Sedia – P
Lauren Seyler – AT
Melanie Schroer – I
Steven Shaak – ¾ AT
Peter Straub – P
Melissa Zwick – AC
Vacant – TS

Chemistry (18)
Dmytro Berbasov – ¾ AT
Erin Brown – AC
Pamela Cohn – AC
Sarah Gray – AT
Kristen Hallock-Waters – AC
Steven Kalman – AC
Kelly Keenan – P
Wooseok Ki – AC
Jennifer Martin – AT
Robert Olsen – AT
Barry Pemberton – AC
Elizabeth Pollock – AC
GorDan Reeves – AC
Marc Richard – AC
Christine Snyder – ¾ AT
Lori Vermeulen – P
Aaron Wohlrab – ½ AT
Vacant – TS

Environmental Studies (8)
Tait Chirenje – P
Weihong Fan – P
Jessica Hallagan – AC
Vashti Mahadeo – TS
Daniel Moscovici – P
Matthew Olson – AT
Catherine Tredick – AC
Emma Witt – AC

Geology (2)
Matthew Severs – AC
Jeffrey Webber – AC

Marine Science (7)
Gordon Grguric – AC
Elizabeth Lacey – AC
Susanne Moskalski – AC
Anna Pfeiffer-Herbert – AC
Mark Sullivan – P
Christine Thompson – AC
Camilla Alves Souto – AT

Mathematics (10)
Bradley Forrest – AC
Renganathan Iyer- AC
Shannon Keough – TS
Pamela Kosick – AC
Suzanne Nezzar – AC
Brandy Rapatski – AC
Yujin Shen – AC
Judith Vogel – P
Chia-Lin Wu – P
Vacant – AT

Physics (10)
Neil Aaronson – P
Benjamin Agyare – AT
Jeffrey Dukes – TS
Philip Eaton – AT
Fang Liu – AC
John R. Manson – P
Monir Sharobeam – P
Yitzhak Sharon – DP
Joseph Trout – P
Benita Villar – 2/3 I

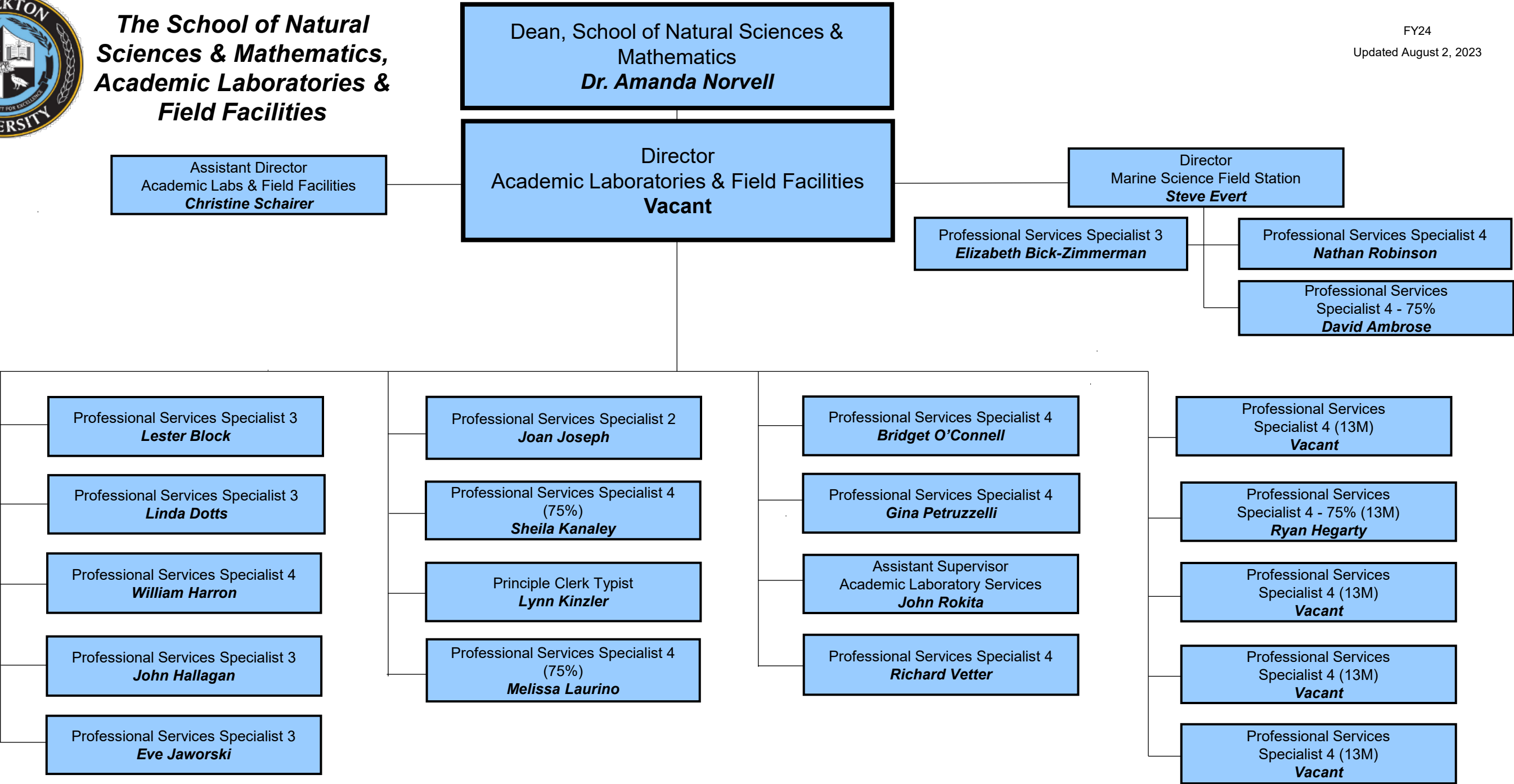
Coastal Zone
Management (1)
M. Shah Khan – AT

Sustainability (3)
Patrick Hossay – P
Ronald Hutchison – AC
Maritza Jaurequi – AC

KEY:
I – Instructor
AT – Assistant Professor
AC – Associate Professor
DP – Distinguished Professor
P – Professor
PCT – Principle Clerk Typist
PSS – Professional Services Specialist
SA – Secretarial Assistant
SCT – Senior Clerk Typist
TA – Technical Assistant
TS – Teaching Specialist
13D – Visiting Professor



**The School of Natural
Sciences & Mathematics,
Academic Laboratories &
Field Facilities**

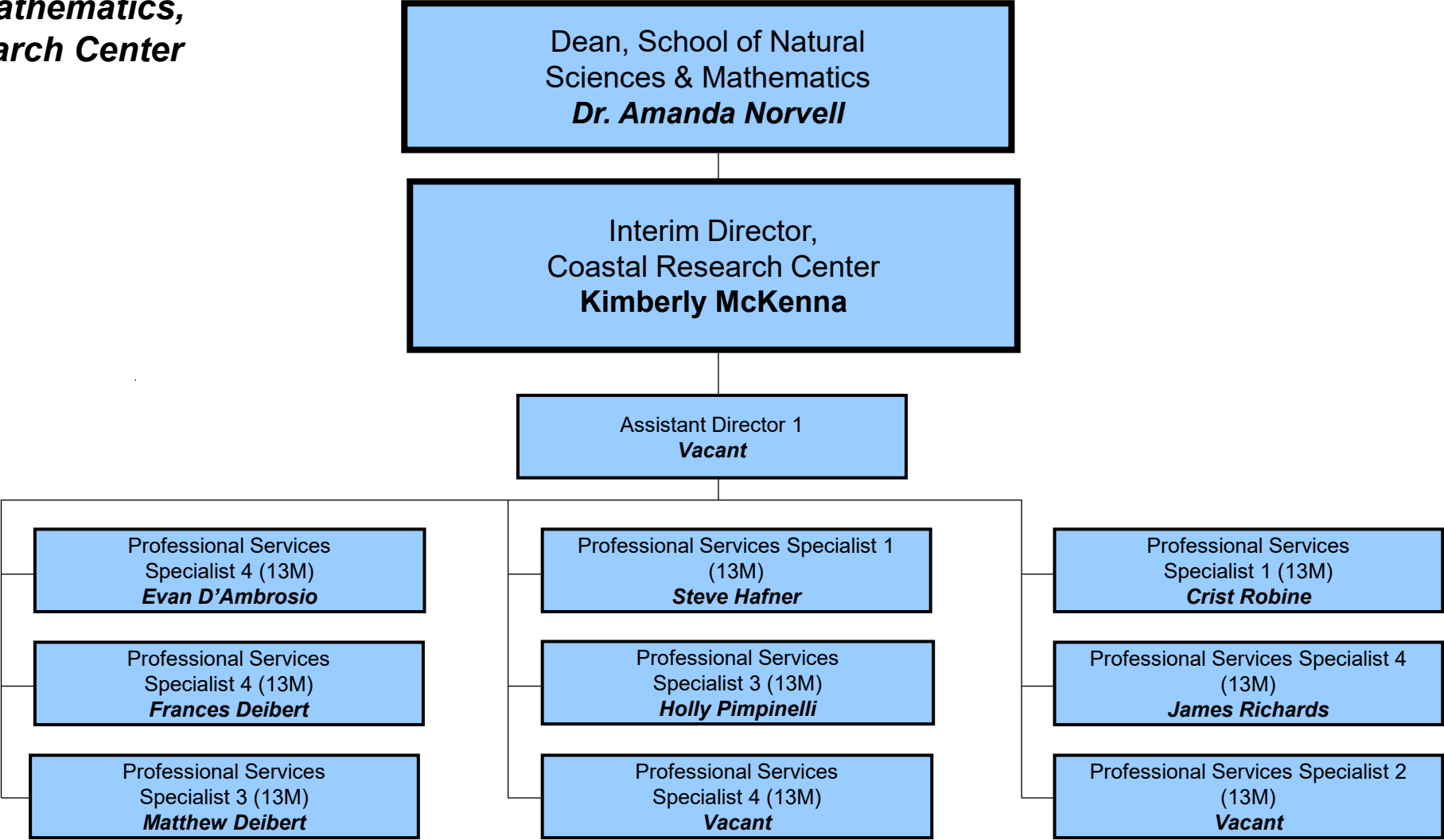




***The School of Natural
Sciences & Mathematics,
Coastal Research Center***

FY24

Updated August 2, 2023



KEY:
13M – Grant Funded