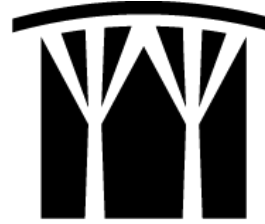


Director's  
Message

Mission

Facility  
Information



**STOCKTON**  
UNIVERSITY

MANAHAWKIN

**Annual Report**  
**2015-2016**

Click  
to go  
Home



Staff

Highlights

Enrollment

Assessment

What are Students  
Saying?

Programming

Community &  
Partnerships

Look Ahead



# Director's Message

We are pleased to offer this annual report for the Manahawkin Instructional Site, which includes the period of July 1, 2015 through June 30, 2016. Since opening in the fall of 2012, we have been successful in integrating Stockton students, faculty, and staff into the local and surrounding communities.

This report highlights our academic support services, educational programs, as well as the site's community engagement. We have cultivated partnerships with businesses, non-profit organizations, and the local chambers of commerce.

Highlighted are a few examples of our accomplishments in meeting the continued demand for academic, co-curricular, educational, and cultural programming.

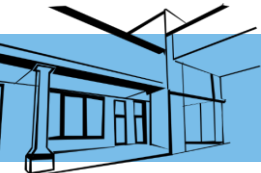
Michele Collins-Davies  
Manager

Eileen Conran-Folks  
Director of Instructional Sites



- The average number of students per class in fiscal year 2016 was 17.58
- Thirty-five percent of courses have a Service-Learning attribute.
- Contemporary Spanish Literature and Film students (LANG 3256) presented a multilingual program for the community titled the "Hispanic World of Film."
- Co-sponsored eleven Student Research Lectures in the Holocaust & Genocide discipline.

- Programming and lecture offerings increased by 51.22 percent from fiscal year 2015.
- Attendance at our programs increased by 44.74 percent from fiscal year 2015.
- Hosted faculty Holocaust & Genocide lectures for students and the community throughout the year.
- Co-sponsored monthly lectures on a wide array of health & wellness topics, as well as hosted our second annual Women's Health Fair in March.
- During our first University Weekend, adjunct faculty member John Wnek hosted a lecture on sea level rise, which attracted a multitude of both community members and students.



Staff

Highlights

Enrollment

Assessment

What are Students  
Saying?

Programming

Community &  
Partnerships

Look Ahead

# Mission

*To provide students with comprehensive academic course offerings, as well as opportunities to participate in co-curricular programs and community-based service projects.*



## Learning

Students are enrolled in a variety of academic courses at the Manahawkin Instructional Site that are hybrid and module-free. Students within the Bachelor of Science in Health Science major are able to complete a number of required courses. We are pleased to be the designated location for the Accelerated Transfer Nursing Program beginning in the fall of 2016.

## Engagement

The Manahawkin Instructional Site provides a variety of opportunities for students to foster partnerships with local non-profit and for-profit agencies through our volunteer and service-learning programs. We are active members of The Southern Ocean County Chamber of Commerce, which allows us to be involved in our community and assist with local projects to promote our town and the region.

## Global Perspective

Our diverse course offerings are taught by professors who possess rich educational backgrounds that provide our students with a global perspective within their academic courses. In addition, we offer a multitude of cultural and historical programs that examine diverse topics and comprehensive points of view.

## Sustainability

The Manahawkin Instructional Site actively participates in recycling programs and other environmentally oriented community initiatives including beach and nature trail cleanups, as well as projects with high school students from the Marine Academy of Technology and Environmental Science.



Staff

Highlights

Enrollment

Assessment

What are Students  
Saying?

Programming

Community &  
Partnerships

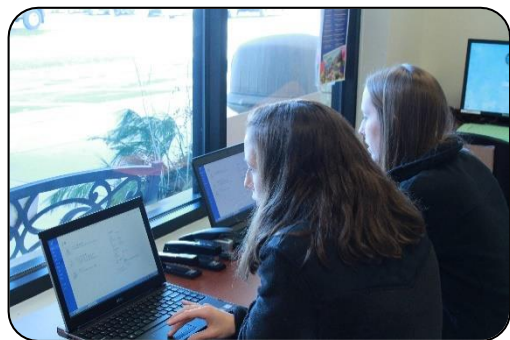
Look Ahead

# Facility Information

In addition to academic courses, rooms at the Manahawkin Instructional Site are leased for meetings, conferences, and other special events.

Located minutes from both the Garden State Parkway and Long Beach Island, the Manahawkin Instructional Site offers two 35-seat smart classrooms, each complete with a laptop cart.

The facility has student computer stations in the lobby and administrative office space. All public terminals have internet access and are available to students during site hours. Each terminal includes Microsoft applications including Word, Excel, and PowerPoint.



Staff

Highlights

Enrollment

Assessment

What are Students  
Saying?

Programming

Community &  
Partnerships

Look Ahead





**Michele Collins-Davies—Manager**  
**Nicole Heinrich—Professional Services Specialist**  
**Maria Giunta—Program Assistant**  
**Nick Zebrowski—Program Assistant**  
**Jim Earle—Security Specialist**

## Staff Professional Development

- National Coalition Building Institute (NCBI)
- National Association of Branch Campus Administrators (NABCA) National Conference
- Women in Academia
- *NJ Women's Network in Higher Ed: Women of Color Conference*
- Community Leadership
- Student Affairs Administrators in Higher Education (NASPA) Region II Conference
- Murphy Writing Center Business Writing
- Active Shooter Drill
- Academic Advising
- Security Office Registration Act (SORA) Instructor Renewal Course
- Naloxone Training

## Student Assistant Development

- Writing Tutor training

## Technology Training

- Blackboard
- P-Card
- Google Docs
- Adobe Photoshop
- EYOS
- X25
- R25

## Contact Information:

Stockton University –  
Manahawkin Instructional Site  
712 East Bay Ave, Manahawkin,  
New Jersey 08050  
609-626-3883  
[manahawkin@stockton.edu](mailto:manahawkin@stockton.edu)  
[www.stockton.edu/manahawkin](http://www.stockton.edu/manahawkin)



In collaboration with Stockton University *School of Business*, we sponsored a **Workplace Readiness Forum** for students from Lacey Township High School. Representatives from *Human Resources*, *Service-Learning*, and the *Career Center* spoke to the high school students about appropriate work attire, the benefits of internships, and community service opportunities.



In conjunction with the *Office of Service-Learning*, we hosted a **Voter Registration Drive** for students and the community. Nearly 17% of Manahawkin students registered to vote, as well as several community members.



**Dr. Martin Luther King, Jr. Day of Service** is part of our institutional commitment to serve and engage the community. Seventy-nine individuals dedicated their time to eight service projects. The site incorporated several new initiatives this year. We partnered with the **Marine Academy of Technology and Environmental Science**, local high school, for a nature trail cleanup at the Long Beach Island Foundation for the Arts and Sciences. Personal items were collected from businesses and individuals to create over 125 necessity bags for those in need in both Ocean and Atlantic Counties. Site staff and faculty developed recipe cards for nutritious and budget-friendly one-bag meals that neighboring businesses provided for donation to a local food pantry. Volunteers were taught one-stroke painting techniques to create vases that were donated to memory care facilities. Other activities included constructing activity books for children and developmentally disabled adults, and writing letters to veterans that were distributed to the VA Hospital.



In partnership with the *Office of Service-Learning*, we screened Indie Lens Pop-Up **community cinema films** and facilitated discussions afterward. We showed a total of 5 films including *Autism in Love* and *American Denial*.





# Highlights

We partnered with Stockton *STAND* (Stockton's Student Anti-Genocide Organization) and the *Sam and Sara Schoffer Holocaust Resource Center* to host a **Student Research Lecture Series** on various Holocaust and Genocide topics. Topics included: "Children's Play During the Holocaust," "We are the Branches of Jerusalem," "Breeding the Future Reich," "Upstanders throughout History," "Holocaust Denial," "Historic Transports," "The Holocaust's Impact on the Environment," and "Emmanuel Ringelblum and the Uniqueness of the Warsaw Ghetto."

To see undergraduate student Alison Hesser speak on Historic Transports, click this link:  
<https://youtu.be/2Uuzp0F79E>

## Stockton's Manahawkin Instructional Site

presents

### The Holocaust & Genocide Series

March	April
<b>"Holocaust Denial"</b> Tuesday, March 15th at 12:00PM	<b>"The Holocaust's Impact on the Environment"</b> Wednesday, April 6th at 12:00PM
<b>"Historic Transports"</b> Thursday, March 24th at 12:00PM	<b>"Emmanuel Ringelblum and the Uniqueness of the Warsaw Ghetto"</b> Friday, April 22nd at 12:30PM
<b>"What is Genocide?"</b> Wednesday, March 30th 10:30AM	<b>SCOSA Film "Holocaust Remembrance Day: Defiant Requiem, Journeys in Film"</b> Wednesday, April 27th at 12:00 PM

Please call 609-626-3883 to RSVP.

712 East Bay Avenue | Manahawkin, NJ 08050



STOCKTON UNIVERSITY | SARA & SAM SCHOFFER HOLOCAUST RESOURCE CENTER



STOCKTON UNIVERSITY | MANAHAWKIN

Stockton University is an AA/EQ Institution

The Manahawkin Instructional Site utilized local and regional newspapers, electronic billboards, social media sites, direct mailings, and 35,000 printed copies of the Southern Ocean County Chamber of Commerce Escape Guide, distributed statewide to enhance our **awareness campaign**. In association with *University Relations*, we redesigned the ad, featured adjacent.



STOCKTON UNIVERSITY | MANAHAWKIN

### Take classes in Manahawkin!

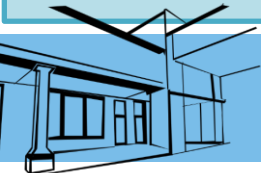
- Undergraduate Courses
- Graduate and Continuing Studies Courses
- Space available for trainings and workshops

MANAHAWKIN Instructional Site  
712 East Bay Avenue | Manahawkin, NJ 08050  
609.626.3883 | stockton.edu/manahawkin

NEW JERSEY'S DISTINCTIVE PUBLIC UNIVERSITY  
Stockton.edu/stocktonnj

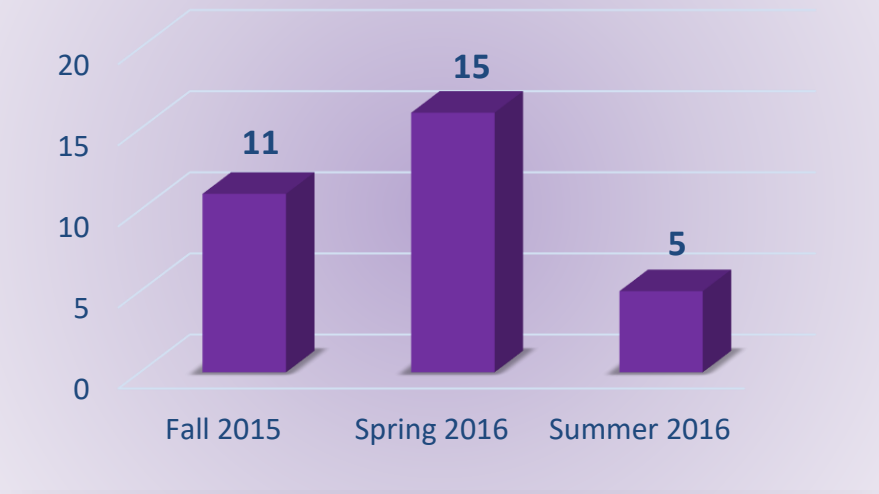


To accommodate the students, a **Charging Station** was installed in the student lounge area.

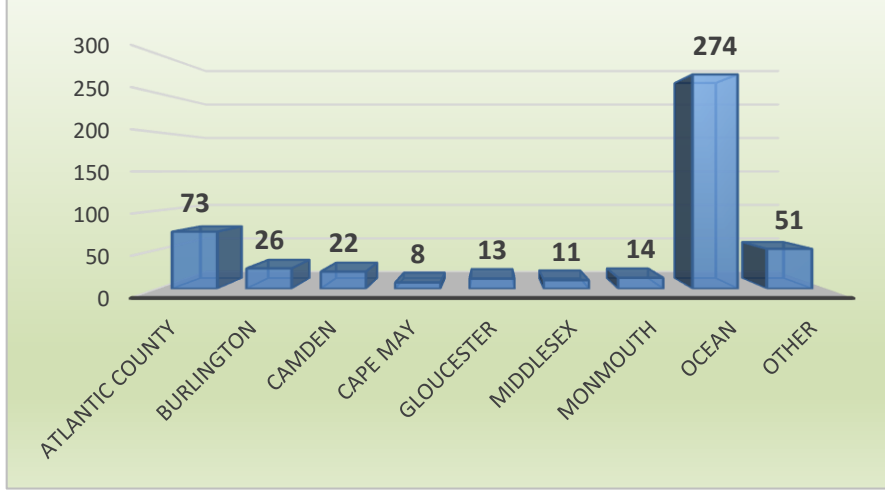


# Enrollment- Academic Year 2015-2016

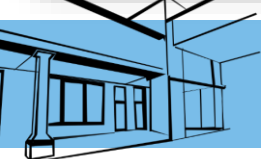
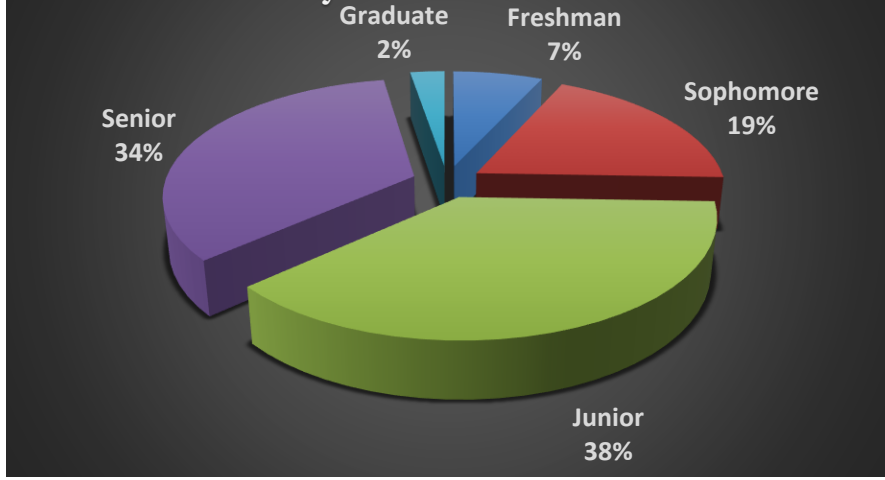
Number of Courses Offered



Enrollment By County



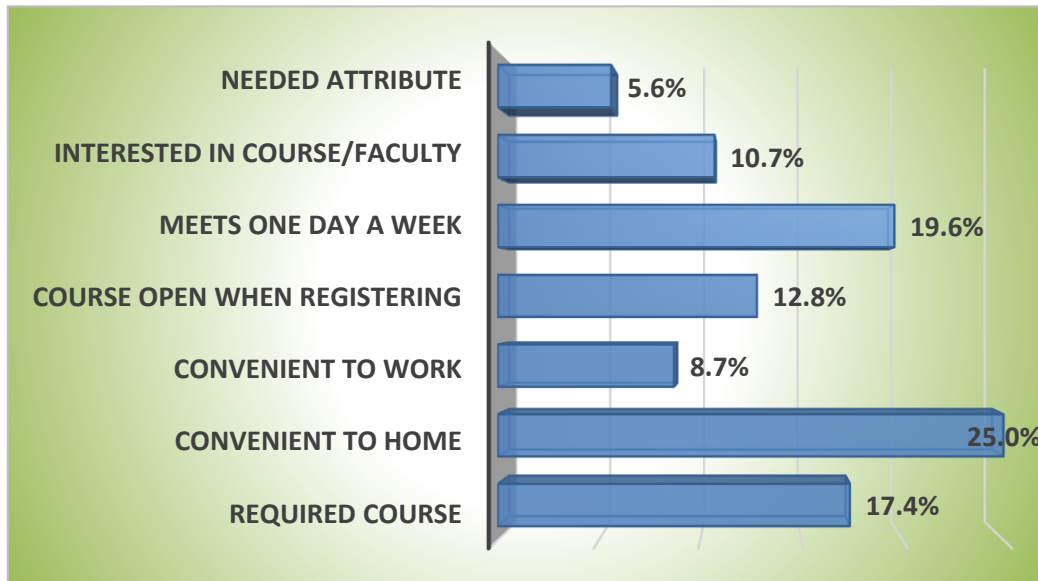
By Grade Level



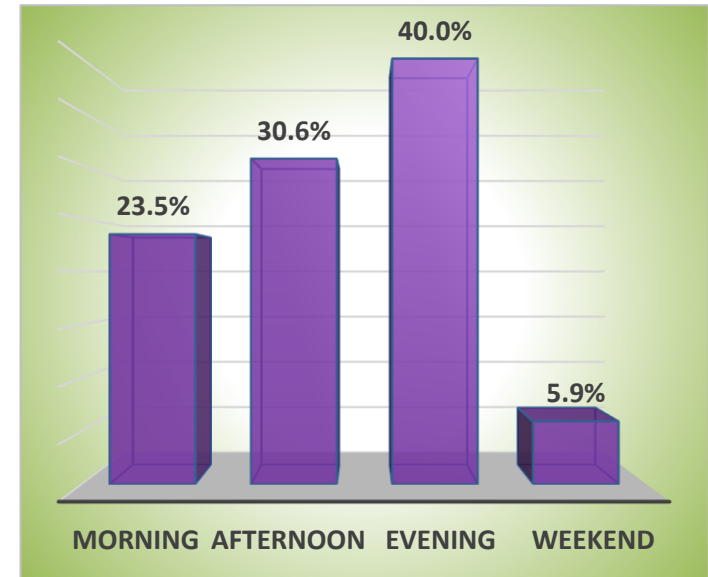


A survey was developed and distributed to students enrolled in courses offered at the Manahawkin Instructional Site during the fall 2015 and spring 2016 semesters. A total of 319 students took the survey. The following data represents their responses.

## Why did you enroll in a course at the Manahawkin Instructional Site?

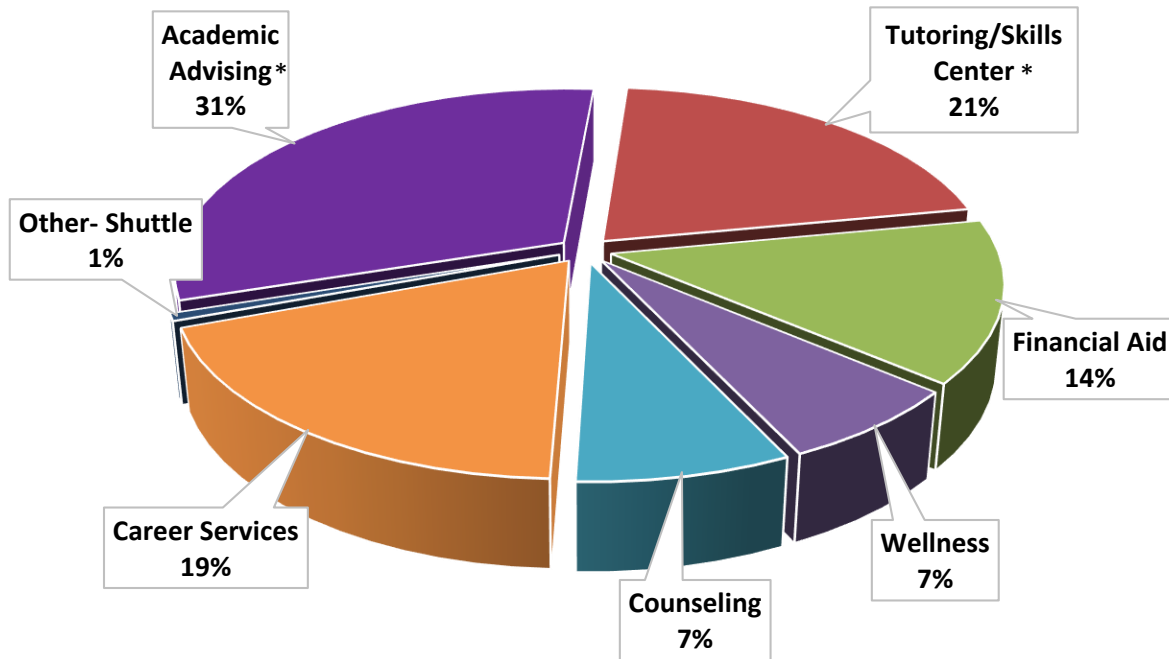


## When are you most interested in taking classes?

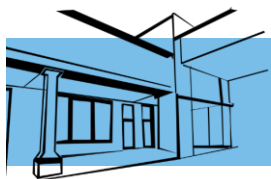


# Assessment

Which services from the Galloway Campus would you like to see at the Manahawkin Instructional Site?



\* In response to student input, the Manahawkin Instructional Site began to offer writing tutoring in the fall of 2015 and continued offering Academic Advising sessions throughout the year.



Staff

Highlights

Enrollment

Assessment

What are Students  
Saying?

Programming

Community &  
Partnerships

Look Ahead

# What are Students Saying about Manahawkin?

Based on the student survey, these are some excerpts of what students had to say about the Manahawkin Instructional Site.

*“The Manahawkin campus is great!”*

*“Parking is so convenient!”*



*“The course offerings work well with my schedule.”*

*“I really enjoyed having a class in Manahawkin.”*



*“I just love that it's close to home.”*

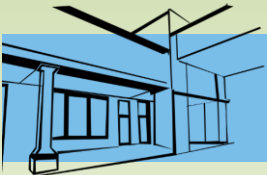
*“The staff is very friendly and helpful.”*



*“I like all of the amenities the site has to offer.”*



*“Love this site!”*



Staff

Highlights

Enrollment

Assessment

What are Students  
Saying?

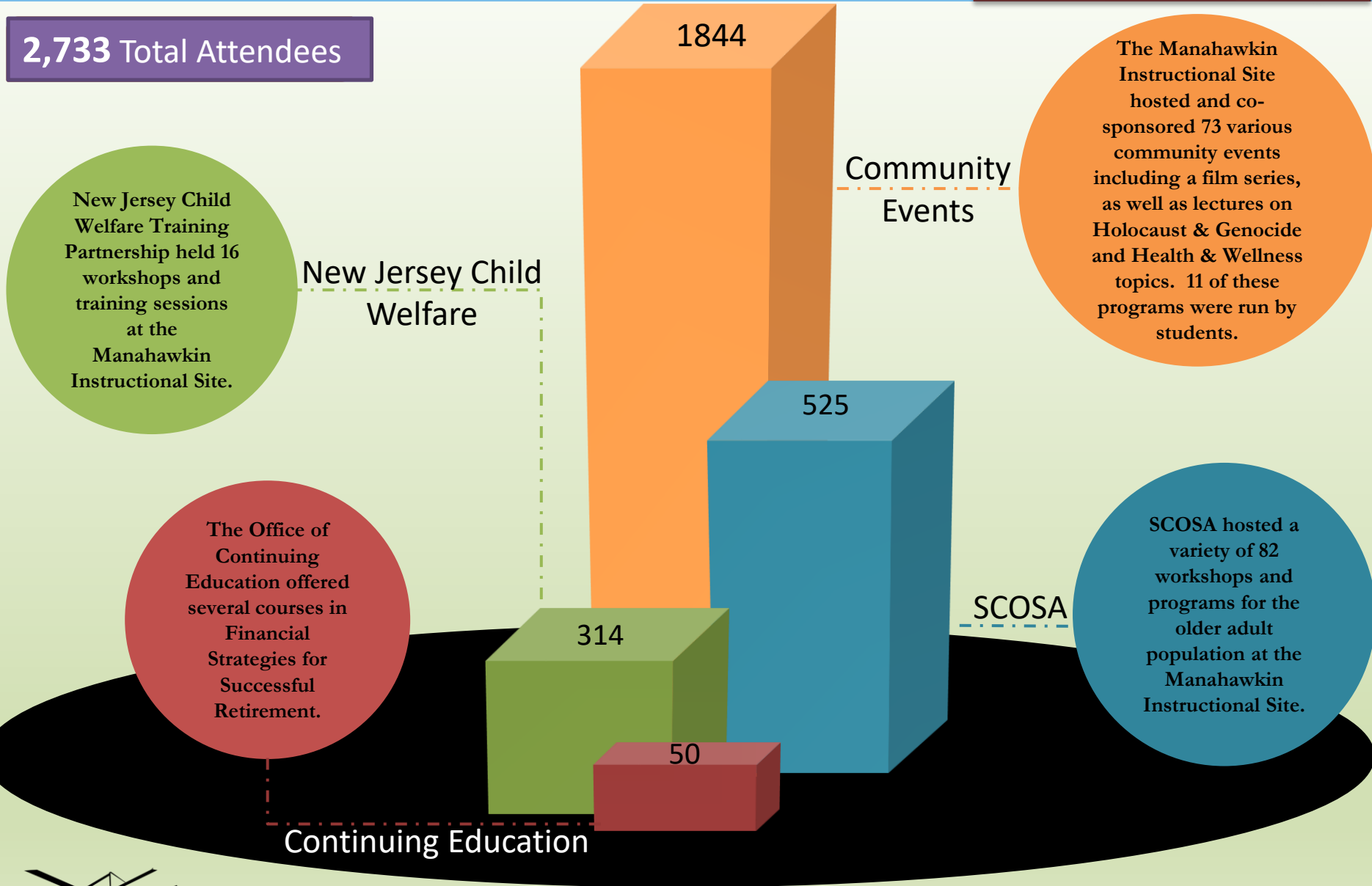
Programming

Community &  
Partnerships

Look Ahead



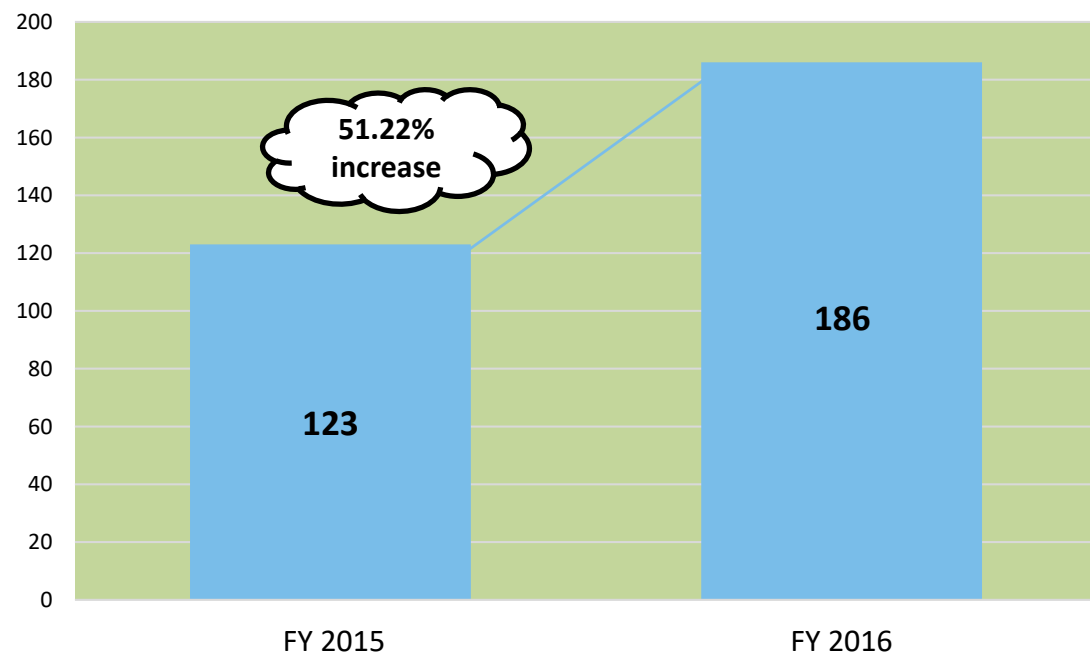
2,733 Total Attendees



# Programming

We offered various programs to enhance the Manahawkin experience for students and the community.

Number of Programs: Fiscal Years 2015 and 2016



Staff

Highlights

Enrollment

Assessment

What are Students  
Saying?

Programming

Community &  
Partnerships

Look Ahead

# Community & Partnerships

Marine Academy of Technology and  
Environmental Science

AtlantiCare

Rothman Institute

Urgent Care Now

Alliance For A Living Ocean

The Long Beach Island Foundation  
of The Arts & Sciences

Southern Ocean County  
Chamber of Commerce

Clean Ocean Action

Project Terrapin

Stafford Township Chamber

Meridian Heath

Tuckerton Seaport

Ocean County College

Jetty Rock Foundation

King of Kings Community Church

US Small Business Administration

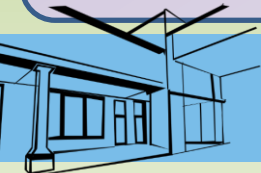
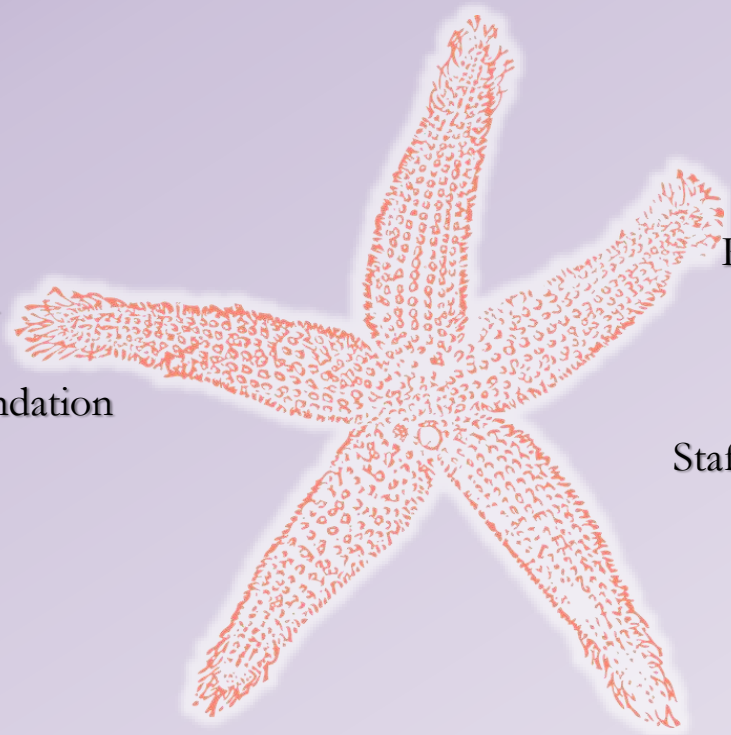
Stafford Township Police Department

Lighthouse International  
Film Festival

Lacey Township High School

Long Beach Township Police Department

Ocean County Prosecutor's Office





# Look Ahead: Goals

## **Goal 1:**

Cultivate relationships across the University to infuse innovative, academic, and experiential learning opportunities for our students.

## **Goal 2:**

Identify additional collaborative opportunities for students and staff from the Manahawkin Instructional Site to work with local non-profit agencies, businesses, and service-related providers on meaningful projects.

## **Goal 3:**

Continue to expand our marketing campaign to encourage prospective and current students, faculty, staff and organizations to utilize the Manahawkin Instructional Site for academic courses, programs and training.

## **Goal 4:**

Expand our support services to include tutoring in math, career development, and wellness programming.

## **Goal 5:**

Research opportunities for grant funding to support lecture series and other programs for students and community partners.

In keeping with our mission and goals, we look forward to continue providing and enhancing quality education at a location convenient for students in our region and to expand course offerings for students in the Health Sciences.

We are pleased to be selected as the primary Stockton location to offer the newly approved Transcel Program, which is a Transfer-friendly/Accelerated program that leads to a BS Nursing beginning in the fall of 2016.

We will continue to provide meaningful student research lectures, films, and programs that enrich the lives of our students, faculty, and community members. Providing students with opportunities for learning, engagement, and service within our community is paramount as we continue to grow and expand our offerings in Ocean County.



Staff

Highlights

Enrollment

Assessment

What are Students  
Saying?

Programming

Community &  
Partnerships

Look Ahead